

# Turtleback

*Golf, Dining, and Conference Center*

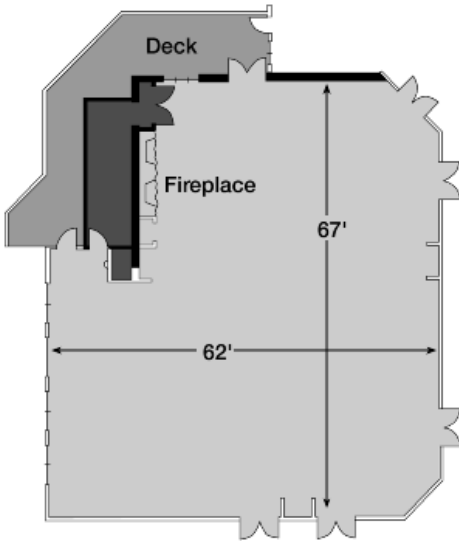
## BANQUET AND CONFERENCE ROOMS

### **PRAIRIE ROOM**

#### *Banquet Halls 1, 2 and 3*

Dimensions: 62' x 67' Square Feet: 3700

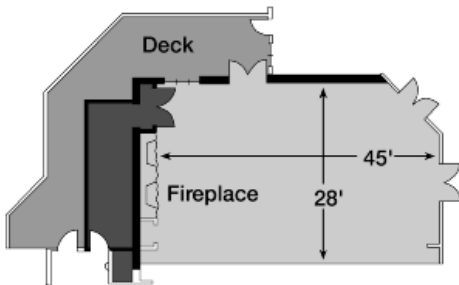
Standard Seating of Banquet Rounds:  
Maximum 275 guests



### **BANQUET 1**

Dimensions: 45' x 28' Square Feet: 1216

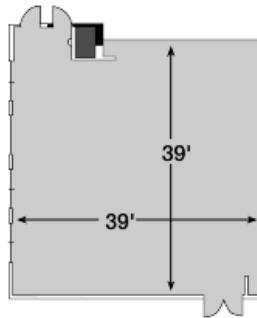
Standard Seating of Banquet Rounds:  
Maximum 60 guests



### **BANQUET 2**

Dimensions: 39' x 39' Square Feet: 1600

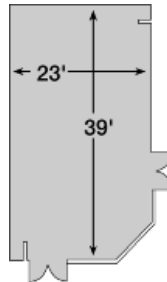
Standard Seating of Banquet Rounds:  
Maximum 64 guests



### **BANQUET 3**

Dimensions: 23' x 39' Square Feet: 844

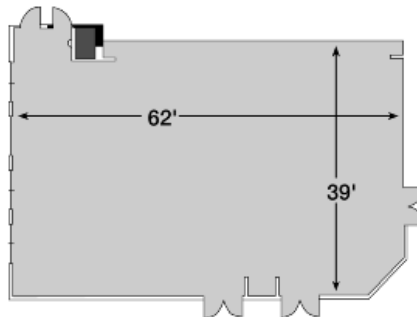
Standard Seating of Banquet Rounds:  
Maximum 25 guests



### **BANQUET 2/3**

Dimensions: 62' x 39' Square Feet: 2484

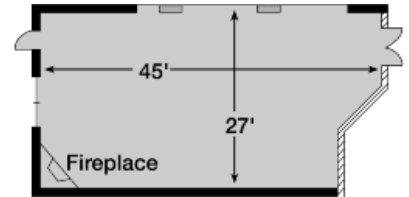
Standard Seating of Banquet Rounds:  
Maximum 120 guests



### **19TH HOLE**

Dimensions: 45' x 27' Square Feet: 1215

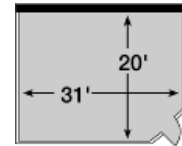
Standard Seating of Hollow Square:  
Maximum 50 guests



### **BOARDROOM**

In-room private phone/fax line.

Standard Seating of U-Shape:  
Maximum 16 Guests



Room Rates

Rooms are standard. Fees apply to any significant setup changes to the room.

### PRAIRIE ROOM

Full Day/Evening \$1000 no meal \$500 w/meal

½ Day Daytime \$500 no meal \$300 w/meal

### BANQUET 1,2,3,19TH HOLE OR BOARDROOM

Full Day/Evening \$400 no meal \$200 w/meal

½ Day Daytime \$200 no meal \$100 w/meal

Off season \$400 no meal \$200 w/meal  
(October-April)

### BANQUET 2/3

Full Day/Evening \$300 no meal \$200 w/meal

½ Day Daytime \$200 no meal \$150 w/meal

Wedding receptions: \$2000 Prairie room  
\$200 19<sup>th</sup> hole